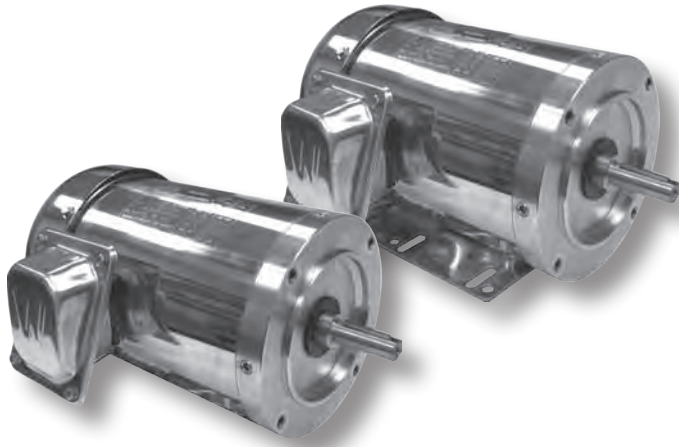


# WORLDWIDE FRACTIONAL HP MOTORS

## Stainless Steel / Washdown Duty Motors

TEFC Enclosure ▪ C-Face ▪ Rigid Base and Round Body  
Three-Phase ▪ 208-230/460 Volt



### Product Overview

- 1/3 - 2 HP
- 3600 and 1800 RPM
- 208-230/460 volt
- TEFC enclosure
- 1.15 service factor
- Class F insulation
- C-face - rigid base and round body
- Double lip seals on both ends of the motor with an additional shaft slinger on the drive-end
- O-rings installed on endbells to eliminate moisture
- Pre-installed watertight, stainless cord connector
- Inverter duty
- Suitable for 50 hz operation with 1.0 service factor



### Rigid Base

HP	RPM	Voltage	Frame	Model Number	FL Amps (A)	FL Eff. (%)	Approx. Wt. (lbs.)	Notes
1/3	1800	208-230/460	56C	WSS13-18-56CB	0.7	82.5	28	
	3600	208-230/460	56C	WSS12-36-56CB	0.9	77.0	29	
1/2	1800	208-230/460	56C	WSS12-18-56CB	0.8	82.5	31	
	3600	208-230/460	56C	WSS34-36-56CB	1.2	73.0	33	
3/4	1800	208-230/460	56C	WSS34-18-56CB	1.2	82.5	33	
	3600	208-230/460	56C	WSS1-36-56CB	1.5	80.0	35	
1	1800	208-230/460	56C	WSS1-18-56CB	1.6	84.0	36	
	3600	208-230/460	56C	WSS1.5-36-56CB	2.0	84.0	39	
1 1/2	1800	208-230/460	56C	WSS1.5-18-56CB	2.1	84.0	42	
	3600	208-230/460	56C	WSS2-36-56CB	2.4	80.0	46	
2	1800	208-230/460	56C	WSS2-18-56CB	3.0	84.0	49	

### Round Body

HP	RPM	Voltage	Frame	Model Number	FL Amps (A)	FL Eff. (%)	Approx. Wt. (lbs.)	Notes
1/3	1800	208-230/460	56C	WSS13-18-56CRD	0.7	82.5	28	
1/2	1800	208-230/460	56C	WSS12-18-56CRD	0.8	82.5	31	
3/4	1800	208-230/460	56C	WSS34-18-56CRD	1.2	82.5	33	
1	1800	208-230/460	56C	WSS1-18-56CRD	1.6	84.0	36	
1 1/2	1800	208-230/460	56C	WSS1.5-18-56CRD	2.1	84.0	42	
2	1800	208-230/460	56C	WSS2-18-56CRD	3.0	84.0	49	



Dimensions On Page 86